

County Surveyor's Record, Tillamook County, Oregon

CHAINS

RESTORED CORNER FOR STATE OF OREGON--DEPARTMENT OF FORESTRY

One quarter corner common to Sections 22 and 23, T2S, R7W, W.M., Tillamook County, Oregon.

ORIGINAL by Albert P. Wilson, July 11, 1891.

16"X16"X4" stone; missing from which a:

12" Fir bears N17½°W 130 lks.; now a 24" windfall, badly rotted, no scribing visible.

12" Fir bears N12½°E 137 lks.; now a 12" stub, 4 ft. high, axe work visible, rest of face rotted away.

RESTORATION by Louis W. Amort, December 31, 1951 (Book 2, Page 91 Tillamook County Records).

16"X16"X4" stone; missing, point falls on steep rocky slope from which a:

28" Fir bears N21½°W 105.1 ft.; now 28" stump, scribes ¼S22 2311 BT visible.

Rock outcrop bears N84 ¾°E 119.5 ft.; in place, marks B0 visible.

RESTORED

Var. 21½°E

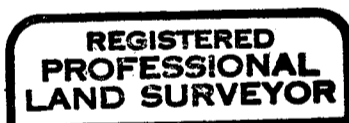
Set 1½"X30" aluminum pipe with 3 ¾" aluminum cap marked "STATE OF OREGON DEPARTMENT OF FORESTRY T2S R7W ¼ S22 S23 1986 LS 1998", 12 inches in ground, in large mound of rock.

No trees within limits.

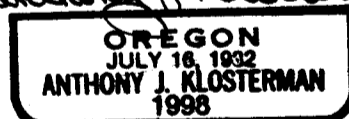
Oregon State Forestry Department metal location poster on 28" Fir stump BT.

Dated August 22, 1986

Restored by



Anthony J. Klosterman



Present and witnessed by David B. Buchholz
Clifford R. Foster

